



Cobb County Water Maximo Mobility

Cobb County...Expect the Best!

Cobb County Water

- The Cobb County Water System (CCWS) purchases drinking water from the Cobb County-Marietta Water Authority and distributes it to over 190,000 homes and businesses in unincorporated Cobb County and in the cities of Acworth and Kennesaw.
- CCWS maintains more than 2,900 miles of water main ranging in size from 6 inches to 14 inches in diameter.
- CCWS operates and maintains approximately 2,500 miles of sanitary sewer lines and 38 pump stations.
- CCWS operates and maintains four water reclamation facilities that have a combined capacity to treat up to 128 million gallons of wastewater a day.

Cobb County... Expect the Best!

CCWS Asset Management Timeline

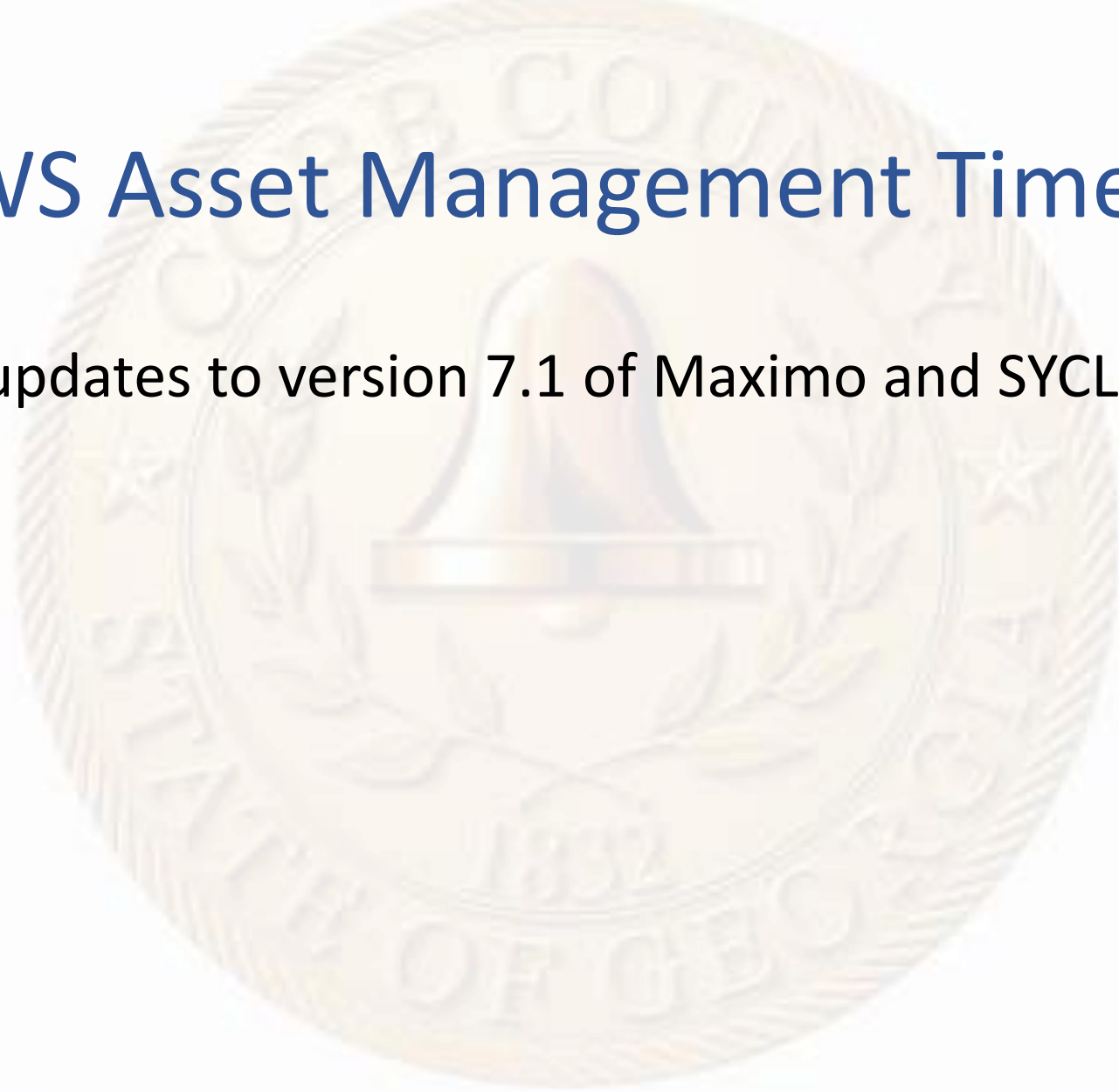
- 2008, Maximo Version 6 is adopted by Cobb Water as a replacement for the Computerized Maintenance Management System (CMMS) Hanson.

CCWS Asset Management Timeline

- 2008, Maximo Version 6 is adopted by Cobb Water as a replacement for the Computerized Maintenance Management System (CMMS) Hanson.
- SYCLO is adopted as the Mobile/Field interface tool for System Maintenance.

CCWS Asset Management Timeline

- 2012 CCWS updates to version 7.1 of Maximo and SYCLO to version 6.



Cobb County... Expect the Best!

CCWS Asset Management Timeline

- 2012 CCWS updates to version 7.1 of Maximo and SYCLO to version 6.
- April 2012, SYCLO is Acquired by SAP.

Cobb County... Expect the Best!

CCWS Asset Management Timeline

- 2012 CCWS updates to version 7.1 of Maximo and SYCLO to version 6.
- April 2012, SYCLO is Acquired by SAP.
- 2013 CCWS Technical Upgrade to Maximo v7.3

CCWS Asset Management Timeline

- 2012 CCWS updates to version 7.1 of Maximo and SYCLO to version 6.
- April 2012, SYCLO is Acquired by SAP.
- 2013 CCWS Technical Upgrade to Maximo v7.3
- 2014 CCWS Maximo Update to v7.5

CCWS Asset Management Timeline

- 2012 CCWS updates to version 7.1 of Maximo and SYCLO to version 6.
- April 2012, SYCLO is Acquired by SAP.
- 2013 CCWS Technical Upgrade to Maximo v7.3
- 2014 CCWS Maximo Update to v7.5
- April 2015, IBM Announces removal of SYCLO support in Maximo.

CCWS Asset Management Timeline

- 2012 CCWS updates to version 7.1 of Maximo and SYCLO to version 6.
- April 2012, SYCLO is Acquired by SAP.
- 2013 CCWS Technical Upgrade to Maximo v7.3
- 2014 CCWS Maximo Update to v7.5
- April 2015, IBM Announces removal of SYCLO support in Maximo.
- July 2015 SAP Announces End of Maintenance for SCYLO (Effectively killing the application).

CCWS Asset Management Timeline

- 2012 CCWS updates to version 7.1 of Maximo and SYCLO to version 6.
- April 2012, SYCLO is Acquired by SAP.
- 2013 CCWS Technical Upgrade to Maximo v7.3
- 2014 CCWS Maximo Update to v7.5
- April 2015, IBM Announces removal of SYCLO support in Maximo.
- July 2015 SAP Announces End of Maintenance for SCYLO (Effectively killing the application).
- August 3rd 2018 Cobb CCWS upgrades to Maximo 7.6.0.9 and DataSplice 5.2.8.

Requirements For CCWS Mobile Solution

- Device and Operating System Agnostic
 - Must be useable on Desktops, Laptops and Mobile Devices
 - Must work on Windows, iOS and Android Operating Systems
 - CCWS has Standardized on Windows 10 for mobile platforms.

Cobb County... Expect the Best!

Requirements For CCWS Mobile Solution

- Device and Operating System Agnostic
 - Must be useable on Desktops, Laptops and Mobile Devices
 - Must work on Windows, iOS and Android Operating Systems
 - CCWS has Standardized on Windows 10 for mobile platforms.
- Must be configurable to the current SYCLO work flow
 - The SYCLO configuration allowed for simplified work flow to assist field personnel and reduce input errors.

Requirements For CCWS Mobile Solution

- Handle licensing per user and not per device.

Cobb County... Expect the Best!

Requirements For CCWS Mobile Solution

- Handle licensing per user and not per device.
- Online (real time) and Offline functionality.

Cobb County... Expect the Best!

Requirements For CCWS Mobile Solution

- Handle licensing per user and not per device.
- Online (real time) and Offline functionality.
- Asset geolocation and mapping availability.

Cobb County... Expect the Best!

Requirements For CCWS Mobile Solution

- Handle licensing per user and not per device.
- Online (real time) and Offline functionality.
- Asset geolocation and mapping availability.
- Inventory Management functionality.

Cobb County... Expect the Best!

Requirements For CCWS Mobile Solution

- Handle licensing per user and not per device.
- Online (real time) and Offline functionality.
- Asset geolocation and mapping availability.
- Inventory Management functionality.
- Post Production Sustainment and Support.

Cobb County... Expect the Best!

Requirements For CCWS Mobile Solution

- Handle licensing per user and not per device.
- Online (real time) and Offline functionality.
- Asset geolocation and mapping availability.
- Inventory Management functionality.
- Post Production Sustainment and Support.
- Expandability beyond Maximo Support (Alternative Asset Management Software)

Mobile Solution Comparisons

Product	Database Compatibility/ Portability	OS Functionality	Connectivity	Mimic SYCLO Workflow	On-Site Training	On-Site Implementation Support	Post Project Development Tools	Local Support
Mobile Informer (Interloc)	Maximo Only	Android and iOS ONLY	Offline and Online	Yes	YES	YES	YES	NO
EZMaxMobile (Interpro)	Maximo Only	Android, Windows, iOS	Offline and Online	Maybe	NO	NO	YES	NO
Mobile Enterprise for Maximo (DataSplice) *pre acquisition	Maximo and Other Systems	Android, Windows, iOS	Offline and Online	Yes	YES	YES	YES	YES*

After vetting Mobile Solution Providers, Mobile Enterprise product from DataSplice selected.



Cobb County... Expect the Best!

The seal of Cobb County, Georgia, is a circular emblem. It features a central bell, a symbol of justice, surrounded by a wreath. The text "COBB COUNTY GEORGIA" is inscribed around the perimeter, with the year "1852" at the bottom. The seal is rendered in a light, semi-transparent gold color.

After vetting Mobile Solution Providers, Mobile Enterprise product from DataSplice selected.

- Satisfied all required project criteria.

Cobb County... Expect the Best!

After vetting Mobile Solution Providers, Mobile Enterprise product from DataSplice selected.

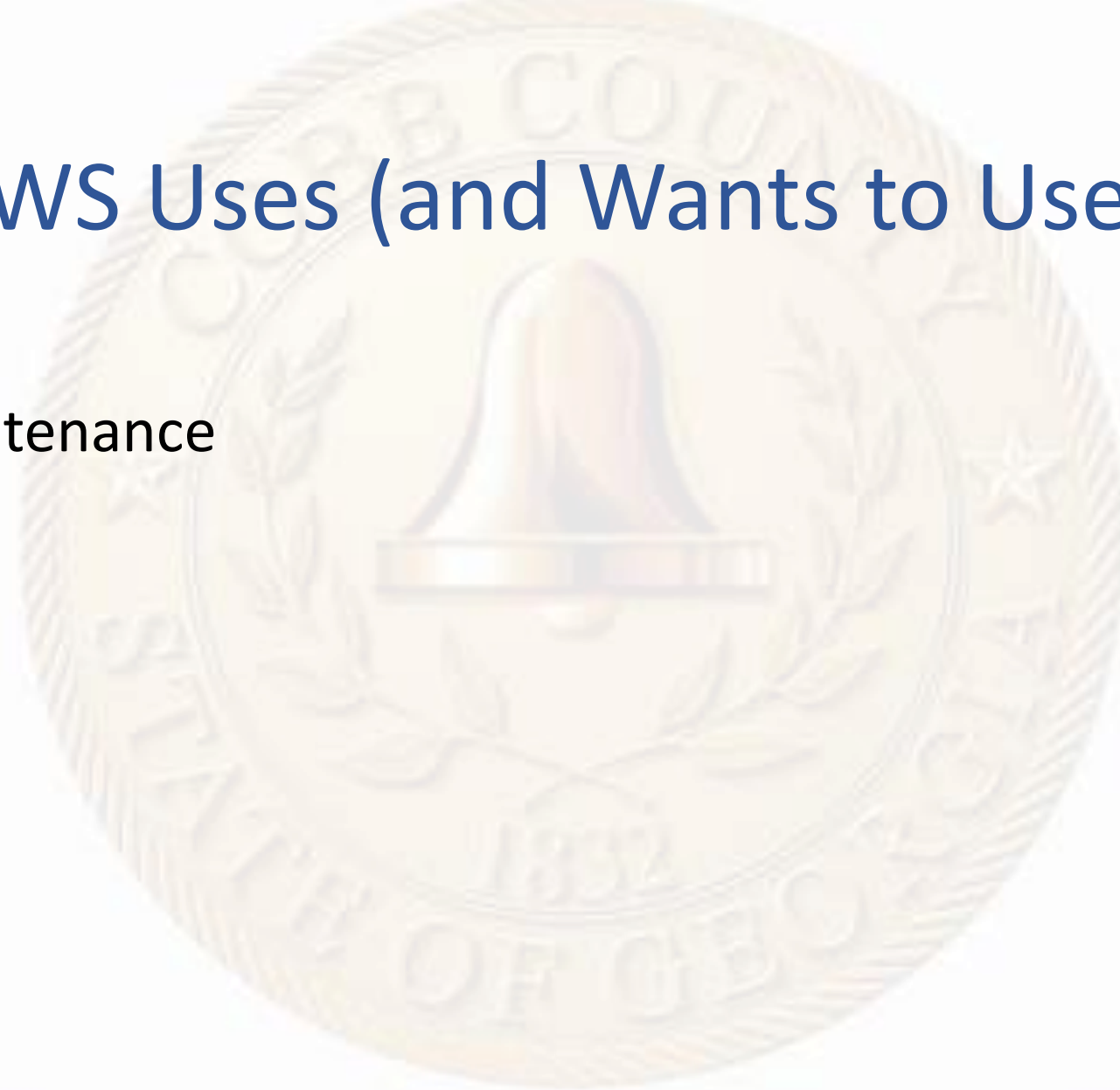
- Satisfied all required project criteria.
- System agnostic not only toward Operating Systems and Device types, but also is configurable to be used on Computerized Maintenance Management Systems other than Maximo.

After vetting Mobile Solution Providers, Mobile Enterprise product from DataSplice selected.

- Satisfied all required project criteria.
- System agnostic not only toward Operating Systems and Device types, but also is configurable to be used on Computerized Maintenance Management Systems other than Maximo.
- Version agnostic with concern to Maximo.

How CCWS Uses (and Wants to Use) Mobile

- System Maintenance



Cobb County... Expect the Best!

How CCWS Uses (and Wants to Use) Mobile

- System Maintenance
 - Work Order assignment and processing.

Cobb County... Expect the Best!

How CCWS Uses (and Wants to Use) Mobile

- System Maintenance
 - Work Order assignment and processing.
 - Child Ticket Creation.

Cobb County... Expect the Best!

How CCWS Uses (and Wants to Use) Mobile

- System Maintenance
 - Work Order assignment and processing.
 - Child Ticket Creation.
 - Inventory Accountability and Usage.

Cobb County... Expect the Best!

How CCWS Uses (and Wants to Use) Mobile

- System Maintenance
 - Work Order assignment and processing.
 - Child Ticket Creation.
 - Inventory Accountability and Usage.
- Water Protection

Cobb County... Expect the Best!

How CCWS Uses (and Wants to Use) Mobile

- System Maintenance
 - Work Order assignment and processing.
 - Child Ticket Creation.
 - Inventory Accountability and Usage.
- Water Protection
 - Wastewater Reclamation Facility (WRF) Inventory Control (In Progress)

Cobb County... Expect the Best!

How CCWS Uses (and Wants to Use) Mobile

- System Maintenance
 - Work Order assignment and processing.
 - Child Ticket Creation.
 - Inventory Accountability and Usage.
- Water Protection
 - Wastewater Reclamation Facility (WRF) Inventory Control (In Progress)
 - Go Live Target end 2020

Cobb County... Expect the Best!

How CCWS Uses (and Wants to Use) Mobile

- System Maintenance
 - Work Order assignment and processing.
 - Child Ticket Creation.
 - Inventory Accountability and Usage.
- Water Protection
 - Wastewater Reclamation Facility (WRF) Inventory Control (In Progress)
 - Go Live Target end 2020
 - WRF Operations Inspections (Future)

Cobb County... Expect the Best!

How CCWS Uses (and Wants to Use) Mobile

- System Maintenance
 - Work Order assignment and processing.
 - Child Ticket Creation.
 - Inventory Accountability and Usage.
- Water Protection
 - Wastewater Reclamation Facility (WRF) Inventory Control (In Progress)
 - Go Live Target end 2020
 - WRF Operations Inspections (Future)
 - WRF Rounds Tracking (Future)

How CCWS Uses (and Wants to Use) Mobile

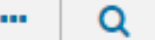
- System Maintenance
 - Work Order assignment and processing.
 - Child Ticket Creation.
 - Inventory Accountability and Usage.
- Water Protection
 - Wastewater Reclamation Facility (WRF) Inventory Control (In Progress)
 - Go Live Target end 2020
 - WRF Operations Inspections (Future)
 - WRF Rounds Tracking (Future)
 - WRF Maintenance Work Orders (Future)

Cobb County... Expect the Best!

Work Order Process



Xmit Clear All



Person

HEWITT026472

Work Group

WSZONE2

Work Team

x HEWITT x SARGEC x THORPJ

Default Storeroom

x 7786

Default Vehicles

x VEH-7786 x VEH-JM-7162

Work Order Process

The screenshot displays a software interface for 'User Preferences'. A modal window titled 'Offline Synchronization' is open, showing the progress of various data synchronization tasks. The modal includes a 'Stop Synchronizing' button and a list of items with their respective progress percentages. Below the progress bars, a list of data categories is shown, including 'Tool Transactions - Assigned Work Orders', 'Tool Info - All Tools', 'Synonym Domain - Work Order Lists', 'Synonym Domain - SR Lists', 'Synonym Domain - Inventory Lists', 'Synonym Domain - Asset Lists', 'Storerooms - Everything', 'Status Permissions - Everything', 'Specifications - Offline By Work Assignment', and 'Spare Parts - Offline By Work Assignment'. A link for '32 more...' is also present.

Item	Progress
Building Offline Digest	100%
Querying Offline Data	68%

- Tool Transactions - Assigned Work Orders
- Tool Info - All Tools
- Synonym Domain - Work Order Lists
- Synonym Domain - SR Lists
- Synonym Domain - Inventory Lists
- Synonym Domain - Asset Lists
- Storerooms - Everything
- Status Permissions - Everything
- Specifications - Offline By Work Assignment
- Spare Parts - Offline By Work Assignment
- 32 more...

Work Order Process

Offline Synchronization [Close]

Synchronization complete 1m 5s

Transfer Data	2s
▼ Record Count	15626
▼ Fetch Data	1m, 1s
Calculate Delta	0s



Building Offline Digest 100%

Querying Offline Data 100%

Work Types - Current Org

Work Orders - User Pref Work Orders

Work Order Process

System Maintenance \ Water								
Work Order	Stat...	Description	Street Address	Priority	Work Type	Work Group	Report D...	
 2382840	APPR	POSSIBLE LEAK AT MAIN	187 CRANFILL RD SE	3	CM	WSZONE2	12/01/2020	
 2382839	APPR	SEWER BACK UP	1189 GRACE ST SW	5	INVST	WSZONE2	12/01/2020	

Work Order Process

← Back | 2382840: APPR - POSSIBLE LEAK AT MAIN / More ▾ (1 / 2) < >

Start Work Hold Transfer Complete Sections ▾ Xmit

System Maintenance \ Water

Work Order	2382840
Status	APPR ▾
Description	POSSIBLE LEAK AT MAIN
Street Address	187 CRANFILL RD SE
Asset	444716 ↗
Asset Description	SS Gravity Main: 202-T033, 202-T004, DIA 8.0, VC
Priority	3 ▾
Work Type	CM ▾
Work Group	WSZONE2 ▾

Work Order Process

← Back | 2382840: APPR - POSSIBLE LEAK AT MAIN / More ▾ (1 / 2) < >

Start Work Hold Transfer Complete Sections ▾ Xmit

System Maintenance \ Water

Asset	444716	↗
Asset Description	SS Gravity Main: 202-T033, 202-T004, DIA 8.0, VC	
Priority	β	▾
Work Type	CM	▾
Work Group	WSZONE2	▾
Lead	HEWITT026472	↗
Crew		▾
Failure Code	SSGRAVMAN	▾
Problem Code		▾

Work Order Process

← Back | 2382840: APPR - POSSIBLE LEAK AT MAIN / More ▾ (1 / 2) < >

Start Work Hold Transfer **Cancel** OK ✓

System Maintenance \ Water

Asset Description SS Gravity Main: 202-1033, 202-1004, DIA 8.0, VC

Priority 3

Work Type CM

Work Group WSZONE2

Lead HEWITT026472

Crew

Failure Code SSGRAVMAIN

Problem Code

Type WORK

Start Time 9:34 AM

Work Order Process

← Back | 2382840: APPR - POSSIBLE LEAK AT MAIN / More ▾ (1 / 2) < >

Start Work Hold Transfer **Cancel** Confirm ✓

System Maintenance \ Water

Asset Description: SS Gravity Main: 202-T033, 202-T004, DIA 8.0, VC

Priority: 3

Work Type: CM

Work Group: WSZONE2

Lead: HEWITT026472

Crew:

Failure Code: SSGRAVMAN

Problem Code:

Add labor for:

Work Team ▾

Work Order Process

← Back | 2382840: APPR - POSSIBLE LEAK AT MAIN / More ▾ (1 / 2) < >

Start Work Hold Transfer

System Maintenance \ Water

Asset Description: SS Gravity Main: 202-T033, 202-T004, DIA 8.0, VC

Priority: 3

Work Type: CM

Work Group: WSZONE2

Lead: HEWITT026472

Crew:

Failure Code: SSGRAVMAN

Problem Code:

Default Vehicles x VEH-7786 x VEH-JM-7162

Cancel Confirm

Work Order Process

← Back | 2382840: INPRG - POSSIBLE LEAK AT MAIN / More ▾ (1 / 2) < >

Start Work Hold Transfer Complete Sections ▾ Xmit ↻ Reset Changes

Working on: 2382840 - POSSIBLE LEAK AT MAIN
System Maintenance \ Water

Work Order	2382840
Status	INPRG
Description	POSSIBLE LEAK AT MAIN
Street Address	187 CRANFILL RD SE
Asset	444716 ↗
Asset Description	SS Gravity Main: 202-T033, 202-T004, DIA 8.0, VC
Priority	3
Work Type	CM
Work Group	WSZONE2

Work Order Process

← Back | 2382840: INPRG - POSSIBLE LEAK AT MAIN / More ▾ (1 / 2) < >

Start Work Hold Tra **Cancel** OK ✓ [Reset Changes](#)

Working on: 2382840 - POSSIBLE LEAK AT MAIN
System Maintenance \ Water

Enter Details

Details Investigated Issue, Found Grey Water coming out of Manhole.

Work Order ID: 2382840

Status: In Progress

Description: POSSIBLE LEAK AT MAIN

Street Address: 1234 Main St

Asset: 444716

Asset Description: SS Gravity Main: 202-T033, 202-T004, DIA 8.0, VC

Priority: 3

Work Type: CM

Work Order Process

✕ Back | Water Data Next ✓

Water Main Type	<input type="text"/>	▼
Pipe Depth	<input type="text"/>	
Pipe Size	<input type="text"/>	
Hold Harmless County LTR1	<input type="checkbox"/>	
Hold Harmless Contractor LTR2	<input type="checkbox"/>	
Hold Harmless Refusal LTR3	<input type="checkbox"/>	
Right of Entry	<input type="checkbox"/>	
Irrigation Letter	<input type="checkbox"/>	
Free Chlorine Before	<input type="text"/>	
Free Chlorine After	<input type="text"/>	
Flush Water Usage	<input type="text"/>	

Work Order Process

✕ Back | Failure Report Popup Next ✓

... | 🔍

Failure Code	SSGRAVMAIN	▼
Problem Code	BLOCKAGE	▼
Cause Code	GREASE	▼
Remedy Code	CLEAR	✕ ▼

Work Order Process

✕ Cancel | Inventory [Lookup] / More ▾ (8 / 32) < > OK ✓

Connect

Item	Description	Type	Storeroom
✓ 65860-1005	PIPE, PVC.SEWER SDR 35, 14' L.W/BELL END - 8"	ITEM	778
✓ 65860-1010	PIPE, 4" SCH-40 PVC , DWV	ITEM	778
✓ 65906-1094	ADAPTER,6"(SDR35) X 4"(SCH40) ADAPTER	ITEM	778
✓ 65906-1095	ADAPTER, 6" CLEAN-OUT SDR-35 SPIGOT	ITEM	778
✓ 65906-1096	ADAPTER, 6" CLEAN-OUT SDR-35 HUB	ITEM	778
✓ 65917-1036	BEND, SEWER PVC 22 1/2 DEGR BELL TO BELL SDR 35 - 6"	ITEM	778
✓ 65917-1037	BEND, SEWER, PVC 22 1/2 DEGR BELL-SPIGOT SDR 35 - 6"	ITEM	778
✓ 65917-1038	BEND, SEWER, PVC 45 DEGR SDR 35 - 4"	ITEM	778
✓ 65917-1039	BEND, SEWER, PVC 22 1/2 D BELL/SPIGOT SDR 35-4"	ITEM	778
✓ 65917-1040	BEND, SEWER, PVC 45 DEGR BELL TO BELL SDR 35 - 6"	ITEM	778
✓ 65917-1041	BEND, SEWER, PVC 45 DEGR BELL TO SPIGOT SDR 35 - 6"	ITEM	778
✓ 65933-1001	COUPLINGS, SEWER, FERNCO CLAY TO CI/PVC - 4"	ITEM	778

Search 🔍

Description ▾
=

Item ▾
=

Storeroom ▾
= ,7786 ▾







Type ▾
= ITEM ▾

New Item

Work Order Process

Material Transactions [New] Cancel OK

Add Line

Item	65917-I038	
Description	BEND, SEWER, PVC 45 DEGR SDR 35 - 4"	
Outstanding		
Quantity	3	 
Unit Cost		
Issue Unit	EA	
Issue Type	ISSUE	
Storeroom	7786	
Bin		
Current Balance	1000.00	

Work Order Process

Materials Popup										
Add Line										
	Item	Description	Outstanding	Quantity	Unit Cost	Issue Unit	Issue Type	Storeroom	Bin	
	65917-I038	BEND, SEWER, PVC 45 DEGR SDR...		3.00		EA	ISSUE	7786		

Work Order Process

✕ Back | Labor Popup (1 / 3) < > Next ✓

+ New ... | 🔍

	Labor	Type	Craft	Start Da...	Start Ti...	Finish Date	Finish Time	Regular H...
	THORPJ	WORK	CRCHIEF	12/01/2020	9:38 AM	12/01/2020		
	SARGEK	WORK	CRCHIEF	12/01/2020	9:38 AM	12/01/2020		
	HEWITT	WORK	ANALYST	12/01/2020	9:38 AM	12/01/2020		

Work Order Process

✕ Back Tools Popup				(1 / 2)	<	>	Next	✓
						+ New	...	Q
	Rotating A...	Tool	Description	Quantity	Hours	Line Cost	Entered By	Enter Date
	VEH-JM-7...	VEH-JETM...	VEHICLE JET MACHINE	1			HEWITT02...	12/01/2020 9:38 AM
	VEH-7786	VEH-TRU...	VEHICLE TRUCK	1			HEWITT02...	12/01/2020 9:38 AM

Work Order Process

✕ Cancel | Child Selection [New] OK ✓

Curb Cut	<input type="checkbox"/>
Curb Cut Size	<input type="text"/>
Driveway Cut	<input type="checkbox"/>
Driveway Cut Size	<input type="text"/>
Road Cut	<input type="checkbox"/>
Road Cut Size	<input type="text"/>
Side Walk	<input type="checkbox"/>
Side Walk Desc	<input type="text"/>
Landscape	<input type="checkbox"/>
Landscape Type	<input type="text"/>

Current CCWS Inventory Project.

- CCWS is currently working with Prometheus Group to add customized Inventory functionality for use in our WRF Warehouses.
 - Receiving
 - Cycle Counts
 - Issues and Returns
- Not all WRF Warehouse spaces have access to WiFi.
- Untethers the Warehouse Technician from their desk.
- Utilizing Windows 10 Laptops and Bluetooth Barcode Scanners.
- Customized Work Flow tailored to the needs of our personnel.



THANK YOU!

Cobb County...Expect the Best!